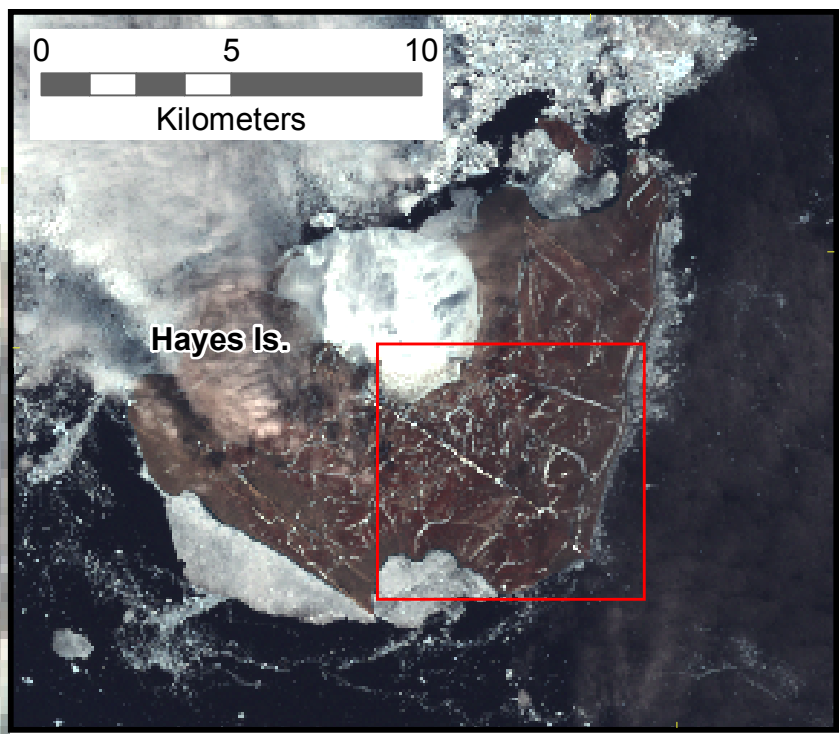


57°40'0"E

57°50'0"E

58°0'0"E

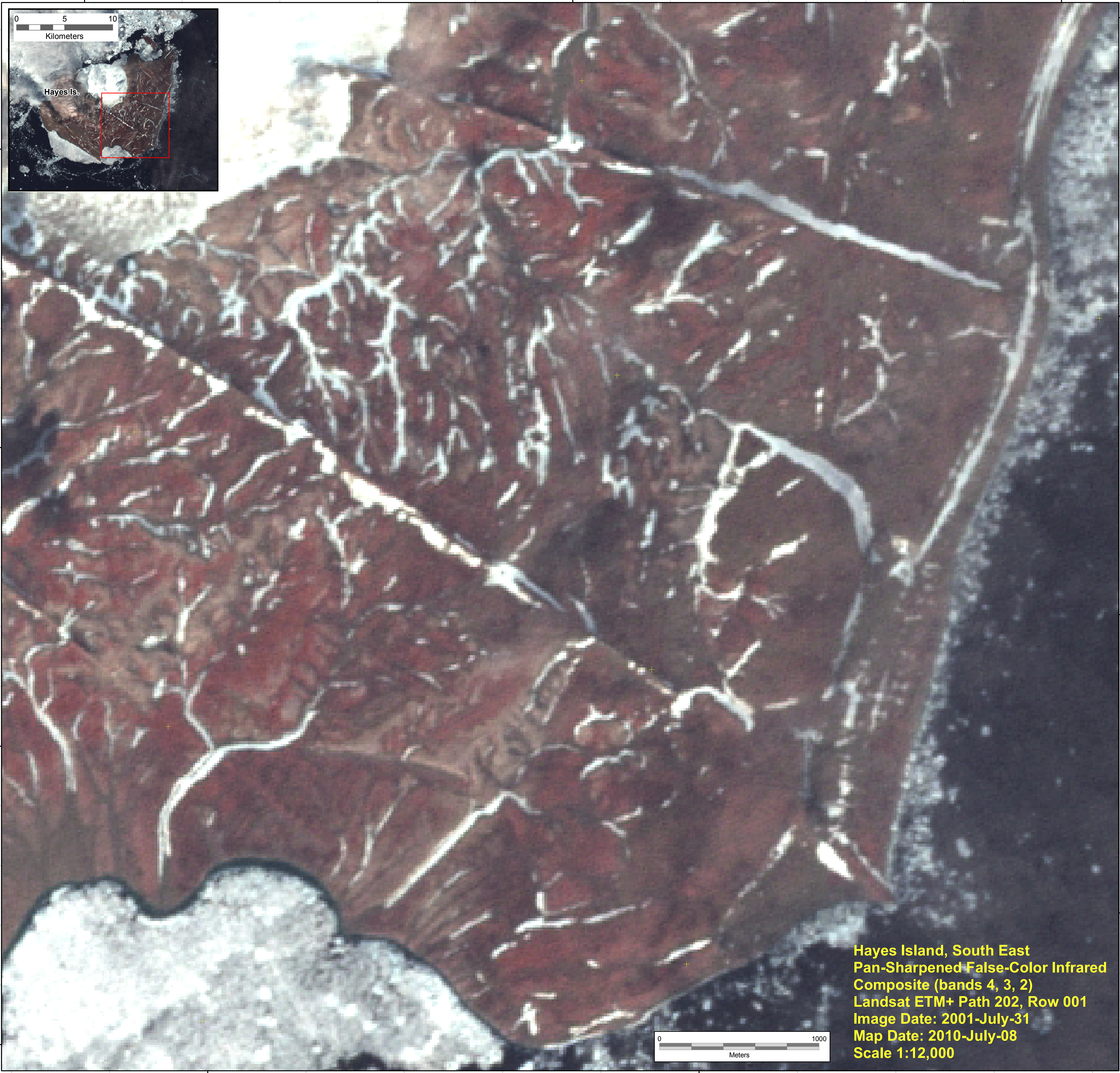


80°35'0"N

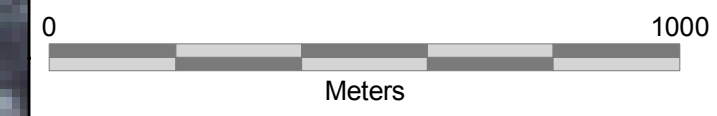
80°34'0"N

80°33'0"N

80°32'0"N



Hayes Island, South East
 Pan-Sharpned False-Color Infrared
 Composite (bands 4, 3, 2)
 Landsat ETM+ Path 202, Row 001
 Image Date: 2001-July-31
 Map Date: 2010-July-08
 Scale 1:12,000



57°40'0"E

57°50'0"E