

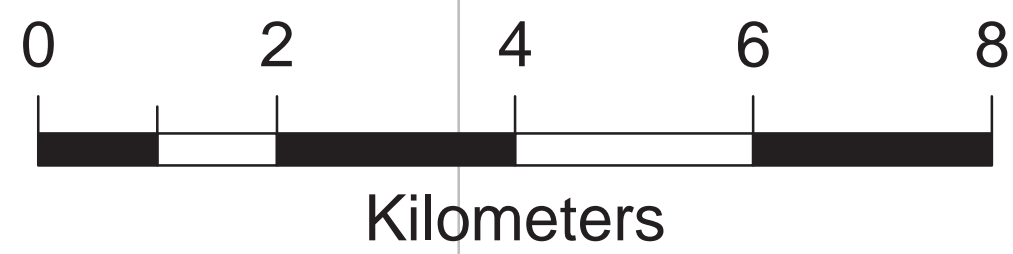
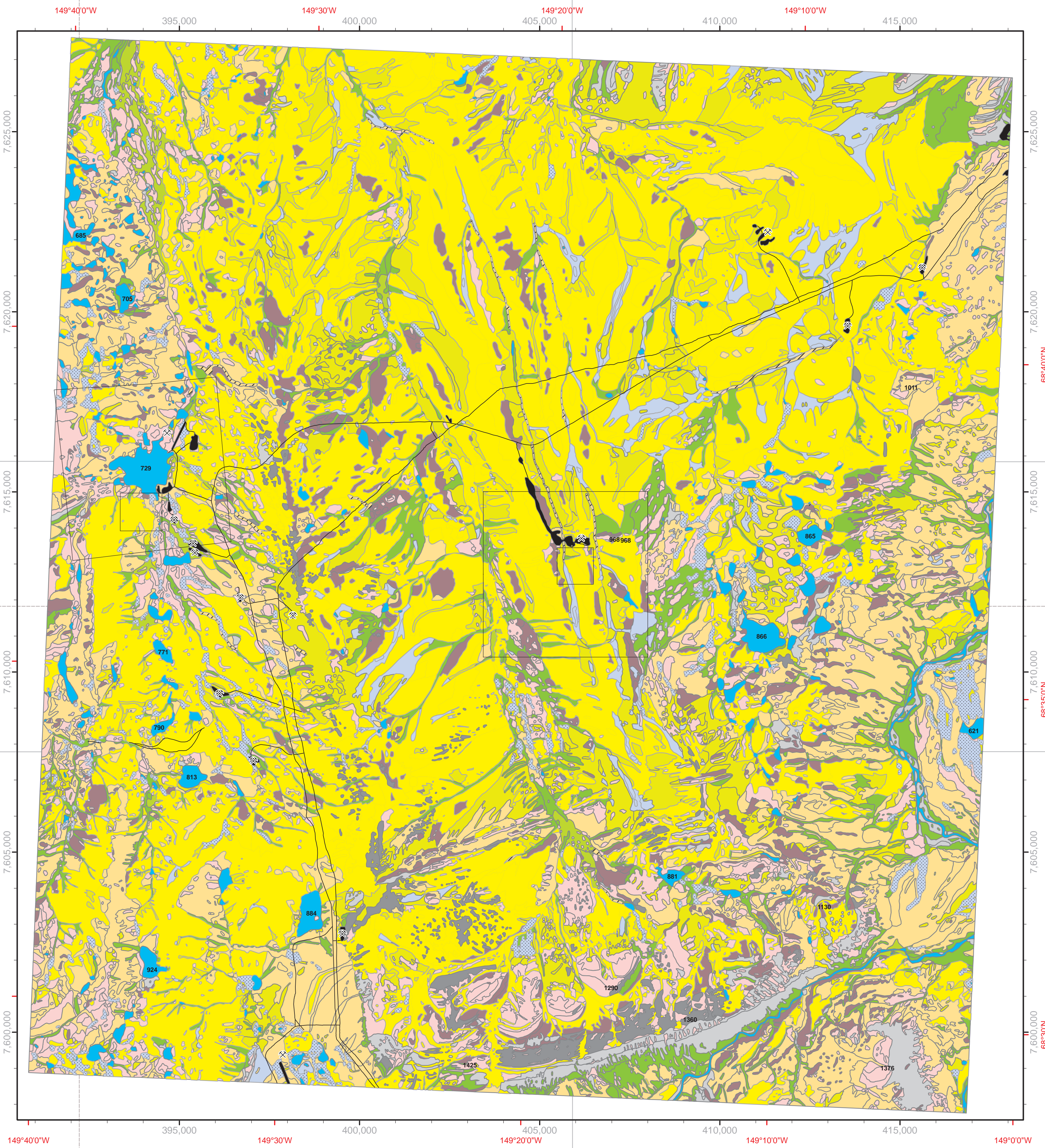
Upper Kuparuk River Region Vegetation mapped at scale, plotted at 1:63,360

Title and Credits

- elevpts_point
- mines_point
- anthro2_arc
- <all other values>
- Barrens**
- 1. Barren (roads and pads)
- 2. Lichens on rocks
- 3. Partially vegetated barrens, and revegetated disturbed areas
- Moist graminoid tundras**
- 4. Tussock sedge, dwarf-shrub, moss tundra
- 5. Non-tussock sedge, dwarf-shrub, moss tundra
- 6. Miscellaneous graminoid, dwarf-shrub, forb communities
- Wet Graminoid Tundras and Water**
- 7. Sedge, moss tundra (poor fen)
- 8. Sedge, moss tundra (fens)
- 9. Water and deep-water herbaceous marsh
- Prostrate Shrub Tundras**
- 10. Prostrate dwarf-shrub, forb, fruticose-lichen tundra
- 11. Hemi-prostrate and prostrate dwarf-shrub, forb, moss, fruticose-lichen tundra
- 12. Hemi-prostrate dwarf-shrub, fruticose-lichen tundra
- Erect Shrub Tundras**
- 13. Dwarf-shrub, sedge, moss tundra
- 14. Dwarf- to low-shrub, tundra
- 15. Low to tall shrublands (riparian south-facing slopes)

- xSedge, hemi-prostrate dwarf shrub, moss tundra
- xForb or graminoid marsh
- xWater

		Area	
		H	Percent
		a	of Map
Barrens			
1. Barren (roads and pads)	No codes on 1:25,000 ITUM. Roads and pads are on separate coverage.		
2. Lichens on rocks	Lichen communities on rocks, including <i>Cetraria nigricans</i> - <i>Rhizocarpon geographicum</i> (12).		
3. Partially vegetated barrens, and revegetated disturbed areas	Barren rock complexes on scree slopes, river gravels, etc. (11); partially vegetated alpine areas (13) including <i>Saxifraga oppositifolia</i> - <i>Saxifraga eschscholtzii</i> (131); partially vegetated riparian areas (14) including <i>Epilobium latifolium</i> - <i>Castilleja caudata</i> (141); revegetated gravel pads with <i>Festuca rubra</i> (142); and non-sorted circles with <i>Anthelia juratzkana</i> - <i>Juncus biglumis</i> .		
Moist graminoid tundras			
4. Tussock sedge, dwarf shrub, moss tundra	Moist acidic tundra complexes (31) mainly acidic tussock tundra dominated by graminoids (311). Dominant plant communities include <i>Eriophorum vaginatum</i> - <i>Sphagnum</i> and <i>Carex bigelowii</i> - <i>Sphagnum</i> (311).		
5. Non-tussock sedge, dwarf shrub, moss tundra	Moist nonacidic tundra complexes (32). Dominant communities include <i>Carex bigelowii</i> - <i>Dryas integrifolia</i> (321); <i>Carex bigelowii</i> - <i>Dryas integrifolia</i> , subtype <i>Equisetum arvense</i> (322); <i>Eriophorum vaginatum</i> - <i>Tomentypnum nitens</i> (323); <i>Carex bigelowii</i> - <i>Dryas integrifolia</i> subtype <i>Cassiope tetragona</i> or <i>Carex bigelowii</i> - <i>Sphagnum</i> , subtype <i>Cassiope tetragona</i> (3113).		
6. Miscellaneous graminoid, dwarf-shrub, forb communities	Various graminoid dominated communities on disturbances including those on landslides and thermokarst areas, and drained lake basins. Dominant communities include <i>Festuca altaica</i> - <i>Poa glauca</i> (Disturbed thermokarst areas and animal dens) (325); and <i>Oeschampsia caespitosa</i> - <i>Carex saxatilis</i> (drained lakes) (326); <i>Carex podocarpa</i> - <i>Salix chamissonis</i> (snowy streambanks) (515).		
Wet graminoid tundras and water			
7. Sedge, moss tundra (poor fen)	Poor fen wetland complexes (41). Dominant plant communities include <i>Sphagnum lenense</i> - <i>Salix fuscescens</i> (411), <i>Sphagnum orientale</i> - <i>Eriophorum scheuchzeri</i> (412), and <i>Eriophorum angustifolium</i> - <i>Sphagnum</i> (413).		
8. Sedge, moss tundra (fen)	Rich fen wetland complexes (42). Dominant plant communities include: Lower microsites: <i>Carex aquatilis</i> - <i>Carex chordeorrhiza</i> (422), and <i>Eriophorum angustifolium</i> - <i>Carex aquatilis</i> (423). Raised microsites: <i>Tomentypnum nitens</i> - <i>Trichophorum caespitosum</i> and <i>Tomentypnum nitens</i> - <i>Carex bigelowii</i> (421).		
9. Water and deep-water herbaceous marsh	Water (6)		
P - Prostrate-shrub tundras			
Herbaceous marshes (includes <i>Hipvul-Arcful</i> and <i>Hipvul-Spahyp</i>) (43)			
10. Prostrate dwarf-shrub, forb, fruticose-lichen tundra	Dry acidic complexes (21); <i>Selsib-Dryoct</i> (211); <i>Salph-Arcalp</i> (212); <i>Hiealp-Betnan</i> (213); <i>Claarb-Stetom</i> (lichen tundra (215); Dry nonacidic tundra <i>Oxynig-Dryint</i> (24) <i>Dryas integrifolia</i> - <i>Astragalus umbellatus</i> (22).		
(Note: Dry tundra complexes)			
11. Hemi-prostrate and prostrate dwarf-shrub, forb, moss, fruticose-lichen tundra	Caline-Castet (acidic stripes) (214); Dry nonacidic tundra <i>Astumb-Dryint</i> (22)		
(Note: mostly stripe complexes with <i>Dryint</i> and or <i>Castet</i> communities)			
12. Hemi-prostrate dwarf-shrub, fruticose-lichen tundra	Snowbed complex (23); <i>Carmie-Castet</i> (231); <i>Dryint Castet</i> (232); <i>Salrot</i> (233)		
(Note: Snowbed complexes)			
Erect-shrub tundras			
13. Dwarf-shrub, sedge, moss tundra	Moist acidic tundra complexes dominated by shrubs (312). Dominant plant communities include <i>Betula nana</i> - <i>Eriophorum vaginatum</i> , and <i>Salix pulchra</i> - <i>Carex bigelowii</i> .		
(Note: Shrubby tussock tundra)			
14. Dwarf- to low-shrub, tundra	Shrub tundra dominated by dwarf birch or willows. Dominant plant communities include <i>Betula nana</i> - <i>Rubus chamaemorus</i> or <i>Salix pulchra</i> - <i>Sphagnum</i> (513).		
15. Low to tall shrublands (riparian south-facing slopes)	Shrublands along streams and water tracks dominated by diamondleaf willow. Dominant plant communities include <i>Salix pulchra</i> - <i>Eriophorum angustifolium</i> (511), feltleaf willow, and lanate willow (512) <i>Salix pulchra</i> - <i>Calamagrostis Canadensis</i> (514) <i>Salix alaxensis</i> tall shrublands (5121) and low shrublands (5122); Misc. shrublands including those dominated by <i>Salix glauca</i> or <i>Alnus crispa</i> (52).		
(Note: includes low shrubs along streams and upland shrubs on southfacing slopes)			
Total			



Bottom