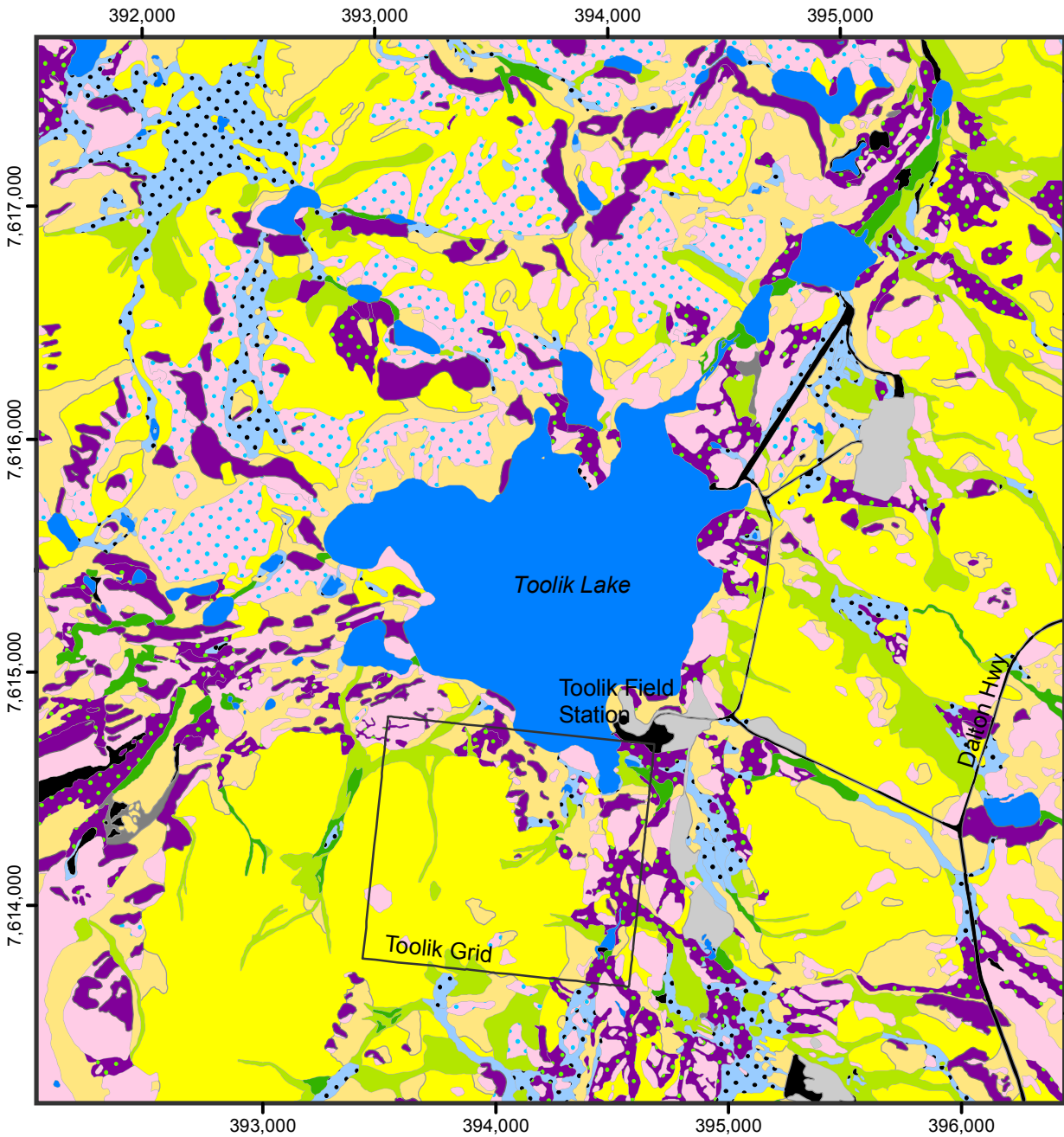
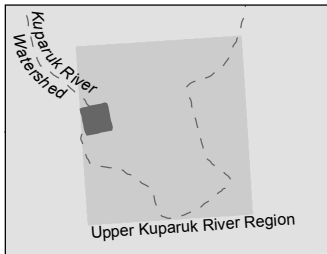


# Toolik Lake Area Vegetation



- Barren**
  - Barrens
  - Lichens on rocks
  - Partially vegetated barrens
- Moist graminoid tundras**
  - Tussock-sedge, dwarf-shrub, moss tundra
  - Nontussock sedge, dwarf-shrub, moss tundra
- Wet graminoid tundras and water**
  - Sedge, moss tundra (poor fen)
  - Sedge, moss tundra (fens)
  - Water and herbaceous marsh
- Prostrate- shrub tundras**
  - Prostrate dwarf-shrub, forb, fruticose-lichen tundra (acidic)
  - Prostrate dwarf-shrub, sedge, forb, fruticose-lichen tundra (nonacidic)
  - Hemi-prostrate dwarf-shrub, fruticose-lichen tundra
  - Hemi-prostrate and prostrate dwarf-shrub, forb, moss, fruticose-lichen tundra
- Erect-shrub tundras**
  - Dwarf- to low-shrub, sedge, moss tundra
  - Low to tall shrublands



Derived from: Walker, D.A. and H.A. Maier. 2008. Vegetation in the Vicinity of the Toolik Field Station, Alaska. Biological Papers of the University of Alaska, No. 28. Institute of Arctic Biology, Fairbanks, AK.

