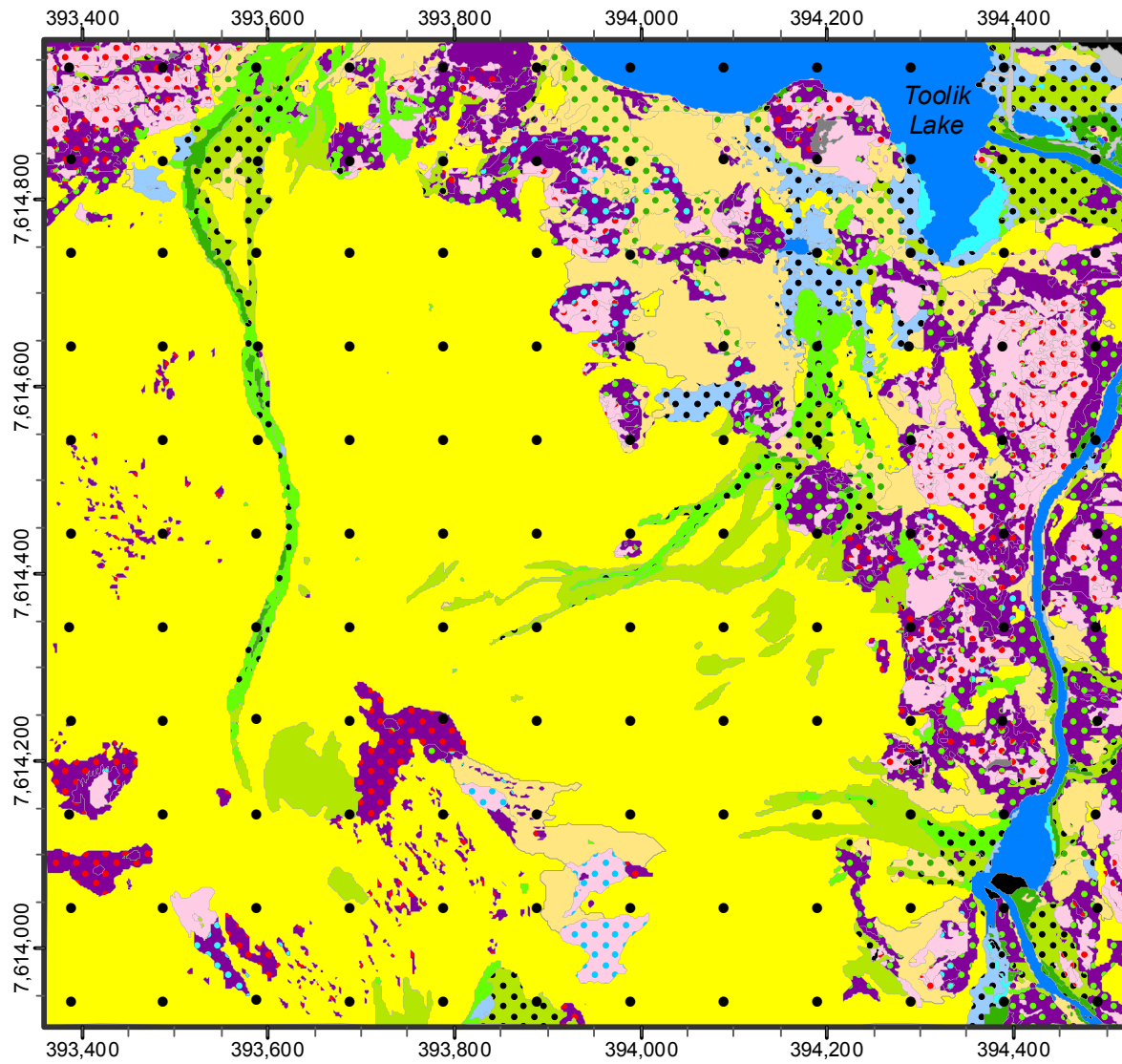
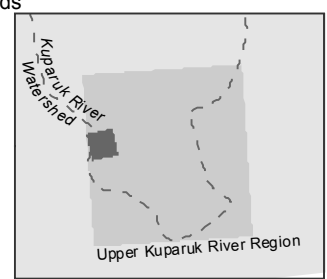


Toolik Lake Grid Vegetation



- Barren
- Lichen communities on rocks
- Partially revegetated areas
- Moist acidic tussock tundra
- Moist nonacidic tundra
- Moist nonacidic tundra with abundant horsetails
- Moist nonacidic tundra with abundant *Cassiope tetragona*
- Raised microsites in wet meadows
- Fens with flowing water
- Unvegetated water
- Herbaceous marsh
- Dry tundra (*Salix phlebophylla* or *Arctous alpina*)
- Dry tundra (*Dryas octopetala*)
- Dry tundra (*Dryas integrifolia*)
- Early melting acidic snowbeds
- Early melting snowbeds on nonsorted stripeds
- Early melting nonacidic snowbeds
- Dry-erect dwarf-shrub tundra
- Shrubby tussock tundra dominated by dwarf *Betula nana*
- Shrubby tussock tundra dominated by *Salix pulchra*
- Dwarf-shrub tundra dominated by dwarf *Betula nana*
- Dwarf-shrub or low-shrub tundra dominated by *Salix pulchra*
- Low shrublands
- Tall shrublands
- Grid Points



Derived from: Walker, D.A. and H.A. Maier. 2008. Vegetation in the Vicinity of the Toolik Field Station, Alaska. Biological Papers of the University of Alaska, No. 28. Institute of Arctic Biology, Fairbanks, AK.

